

3,316 SF | Built-Out Restaurant or Retail

33 South Wabash Ave. East Loop Chicago



Resurgence of The Loop

- Pedestrian activity on State St increased to **35M YTD 2024, 10%** increase over 2023
- CTA ridership **increased by 13%** from 2023
- Citywide **Hotel occupancy rates** as high as **65%**
- **3.2M Metra passengers** in July 2024. A **17% increase** from July 2023.
- **Office occupancy** numbers in Chicago are now at the highest rate outside of Texas peaking around **70%** on the highest occupied day of the week, above LA, NYC and SF
- **Google** commits to the **Loop** with **\$100M redevelopment of Thompson Center for their HQ**
- **The loops residential growth rate** is more than **3 times** as fast as all studied downtowns nationally

The Loop restaurants
and retail average a
combined sales of
\$1.8B



Location Overview

Dining Out



One

Block in proximity to multiple CTA Elevated Rail Commuter lines Red, Blue, Brown, Green, Orange, Pink, and Purple



\$77,404,538

Spent on Food Away From Home within 0.5 Miles



Massive Office Presence

16.5 Million SF of Office

within 0.25M radius

Demographics 2023



Total Population

17,534

0.5 Mile

3,517

0.25 Mile



Average HH Income

\$209,879

0.5 Mile

\$233,508

0.25 Mile



Daytime Population

226,467


0.5 Mile

54,928

0.25 Mile



Local Map

 site = 3,316 SF



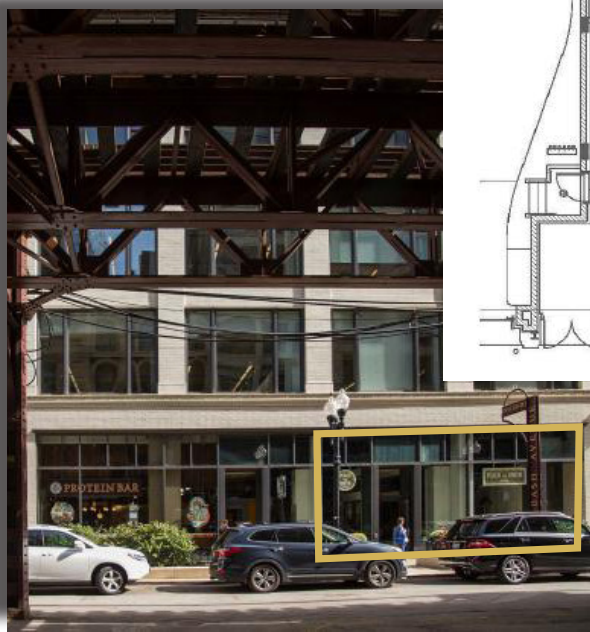
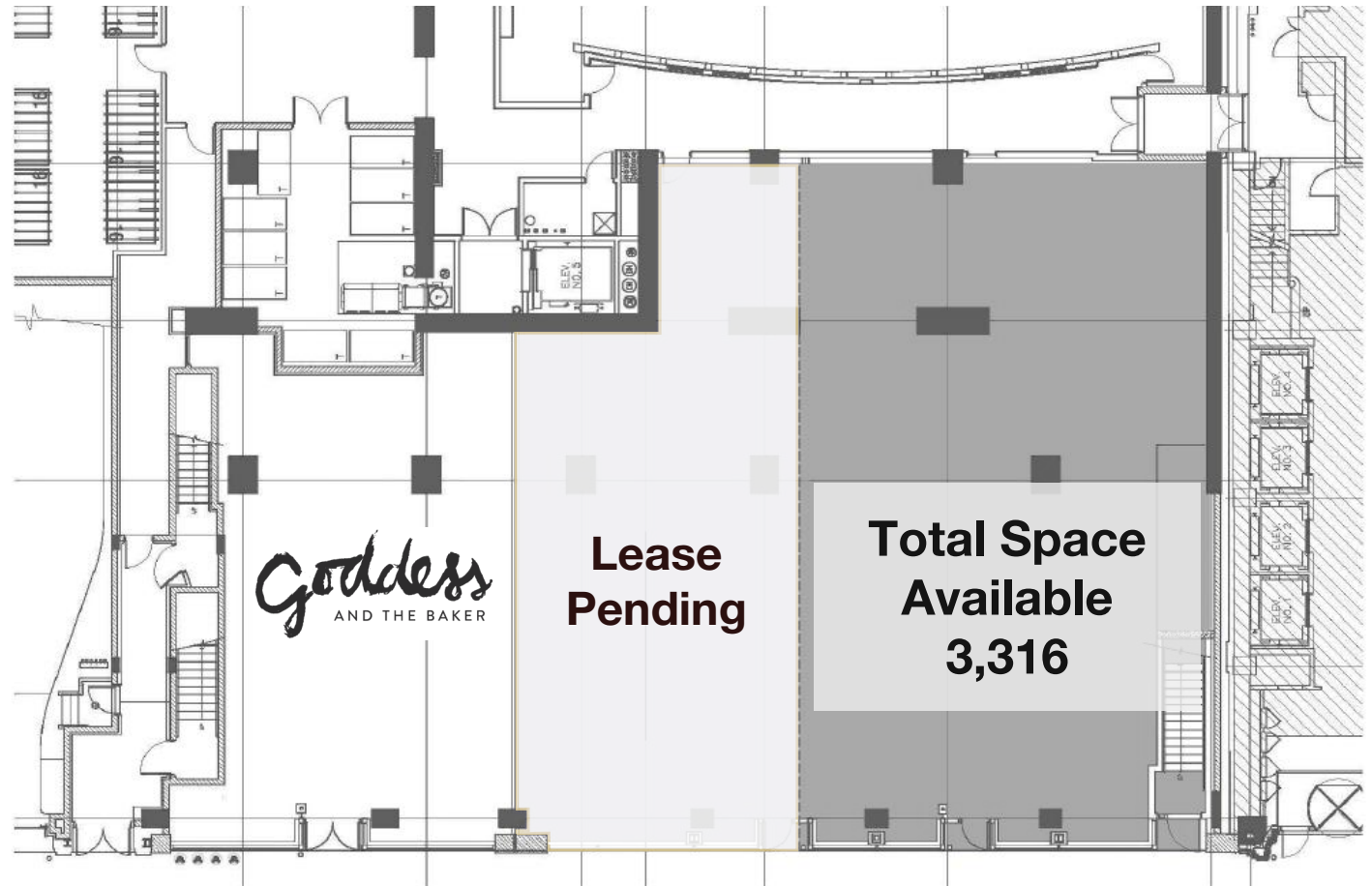
33 S Wabash - 3,316 SF

- Existing restaurant infrastructure, including scrubber system
- 38 feet of frontage on Wabash
- 18-foot ceiling height
- Outdoor seating available
- Located at the base of a 360-unit, luxury, high-rise condominium building, and SAIC
- Surrounding retailers include Target, Macy's, Shake Shack, Raising Cane's, Goddess & Baker, Nando's, Momento and Naf Naf

High Traffic, Built out Restaurant



Site Plan



Wabash Ave
38 FEET OF FRONTAGE

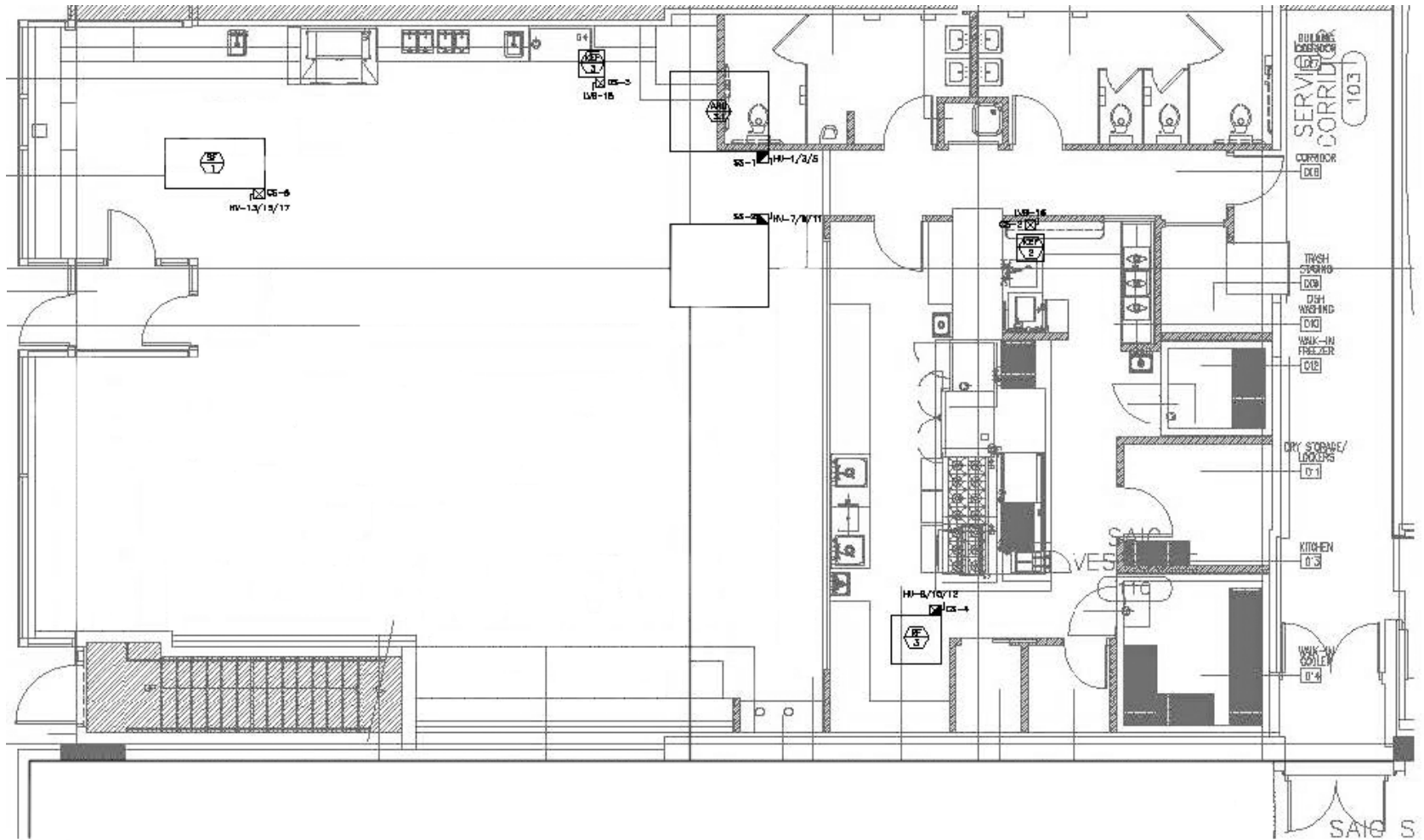
Floor Plan



3,316 SF

Wabash Ave

38 FEET



Street Map



CONTACT:

Holly Estler
 Associate Director
 312-224-3219
 holly.estler@nrmk.com

Larry Kling
 Managing Director
 312-224-3199
 larry.kling@nrmk.com

Licensed in Illinois as Newmark Midwest Region, LLC. The information contained herein has been obtained from sources deemed reliable but has not been verified and no guarantee, warranty or representation, either express or implied, is made with respect to such information. Terms of sale or lease and availability are subject to change or withdrawal without notice.

